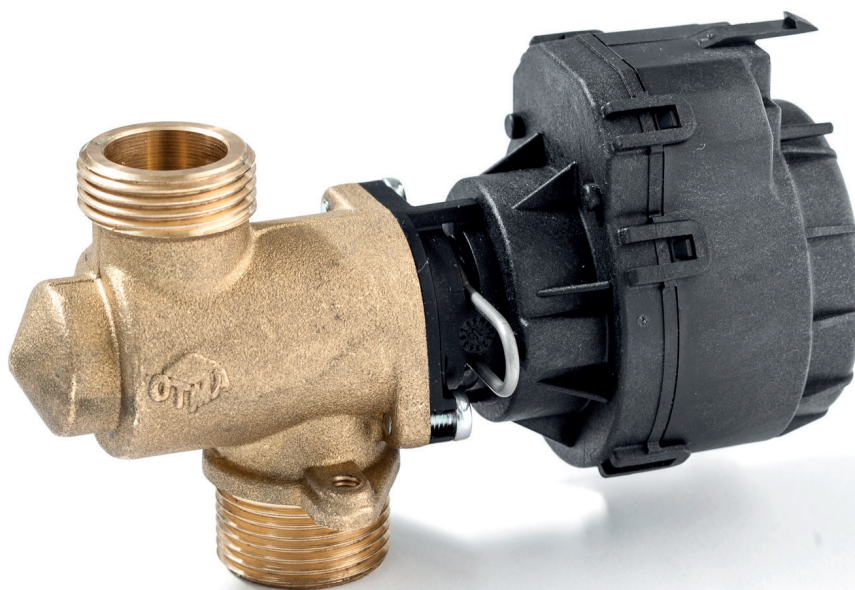


2-way valve 3/4"

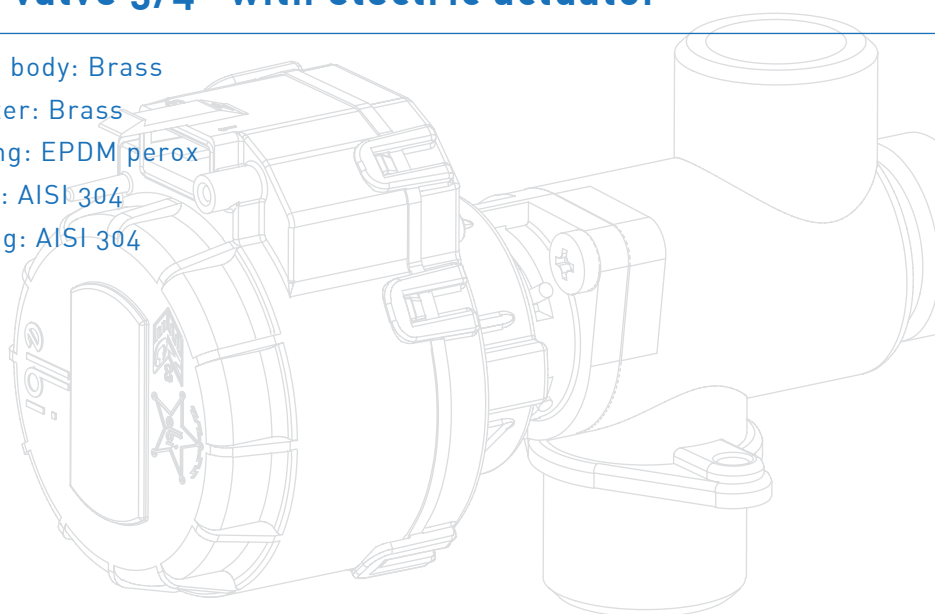
Hydraulic components



2-Way valve 3/4" with electric actuator

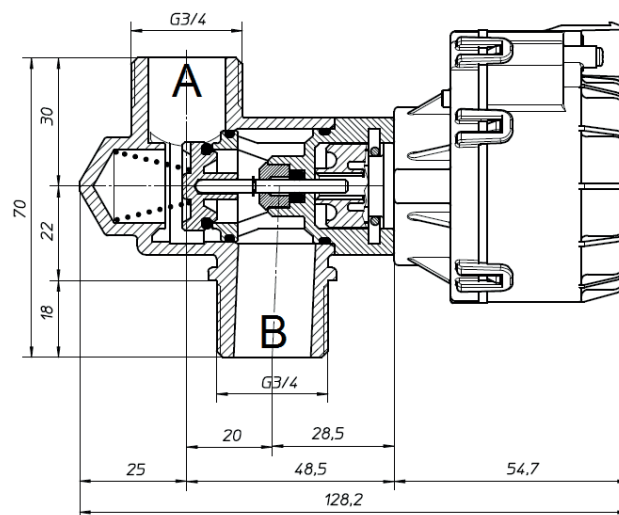
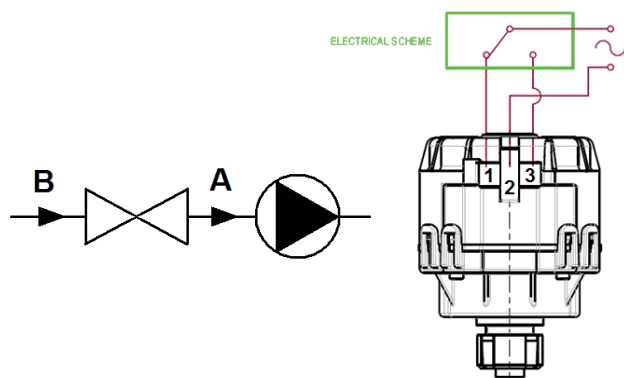
- / Valve body: Brass
- / Shutter: Brass
- / O-Ring: EPDM perox
- / Stem: AISI 304
- / Spring: AISI 304

www.otma.it



2-way valve 3/4"

Hydraulic components



/ technical data

2-way valve

Max working temperature: **95 °C**

Max working pressure: **6 bar**

Differential pressure: **0,7 bar**

Electric actuator

Operating voltage: **230 V - 50 Hz**

Operating force: **130 N**

Nominal stroke: **10 mm**

Extra-stroke spring: **100 N**

Open position:

power on connection 2-1 of electric actuator

Closed position:

power on connection 2-3 of electric actuator

/ drop pressure

Flow rate DP

(l/h) (mbar)

0 0

500 14

1000 54

1500 119

2000 211

2500 329

3000 475

3500 643

4000 842

4500 1069

5000 1323

DP 1bar kv

(m³/h) **4,3**

/ characteristic curves

