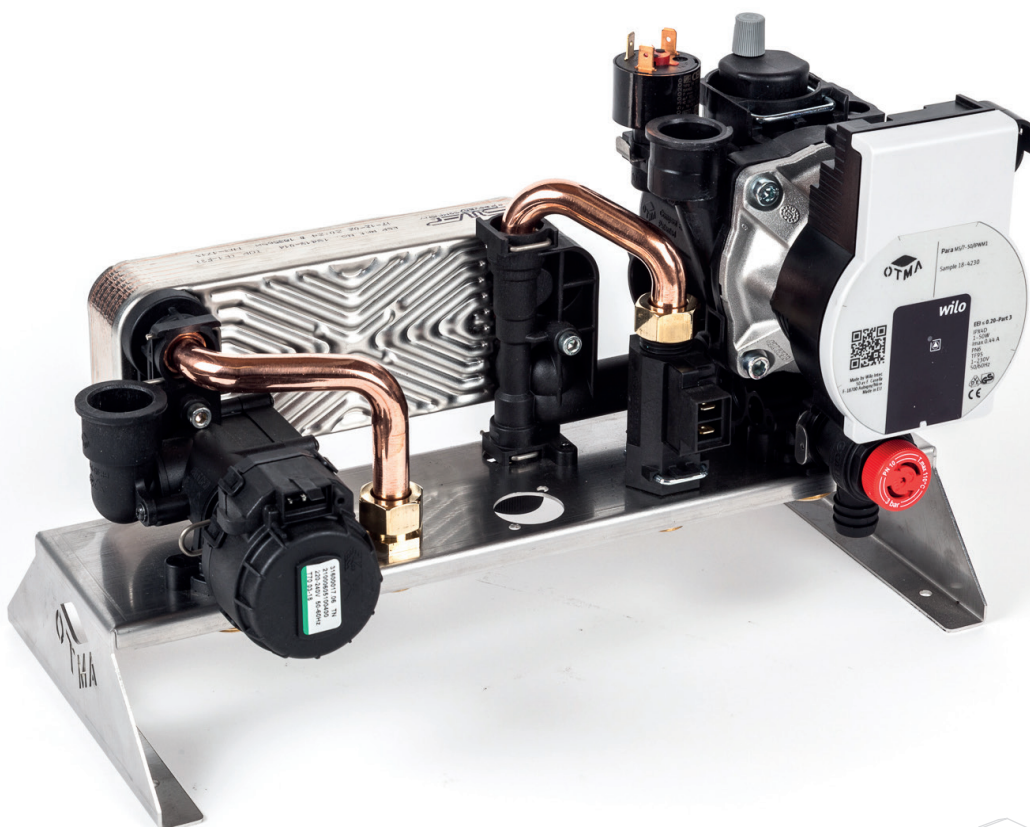


OTMSL-DIN COMBI 154 PA66

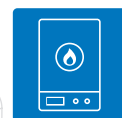
COMPACT BLOCK



Compact hydroblock for Combi boiler

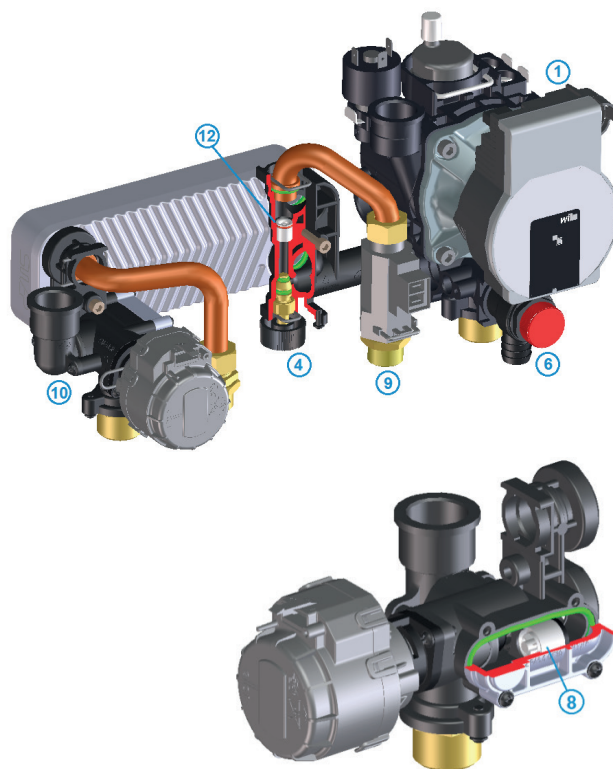
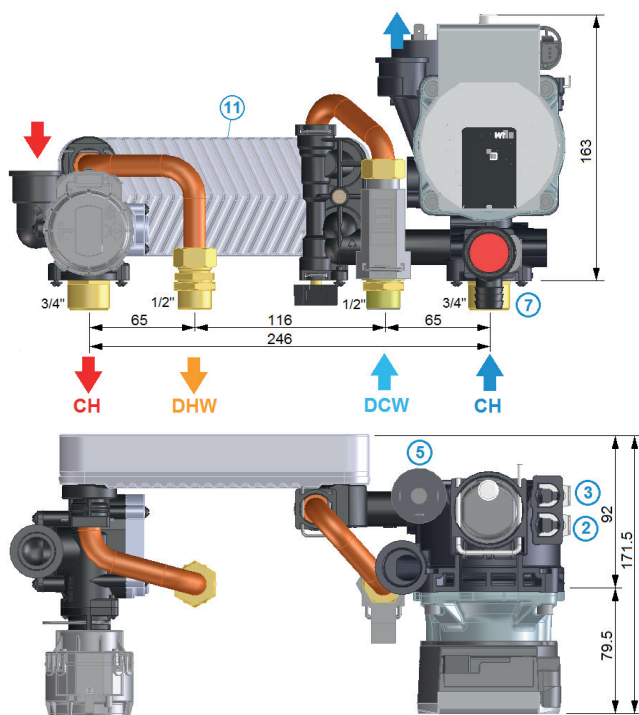
- / Domestic hot water production
with plate heat exchanger
- / Room heating

www.otma.it



OTMSL-DIN COMBI 154 PA66

COMPACT BLOCK



- 1 Pump
- 2 Manometer connection
- 3 Expansion tank connection
- 4 Filling valve
- 5 Pressure switch
- 6 Safety valve
- 7 Drain valve
- 8 Bypass valve
- 9 Flow switch
- 10 3-way valve
- 11 Plate heat exchanger
- 12 Check valve

/ technical data

Max power: **35 kW**

Max temperature: **95 °C**

Pressure CH: **0.3 - 3 bar**

Pressure DHW: **0.15 - 10 bar**

Flow rate DHW

turning on: **2 l/min ± 0.2**

turning off: **1.5 l/min ± 0.2**

/ hydraulic scheme

